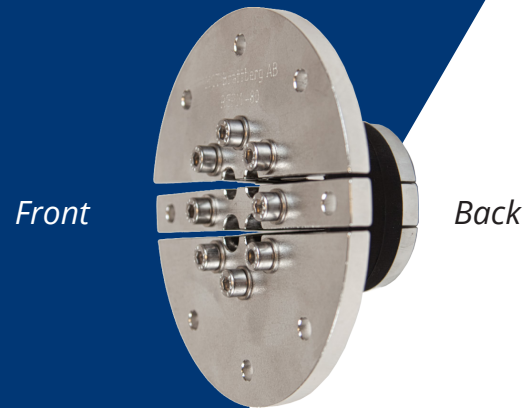


Putting safety first

Information check list RGPM transits Ø 50 to 200 mm

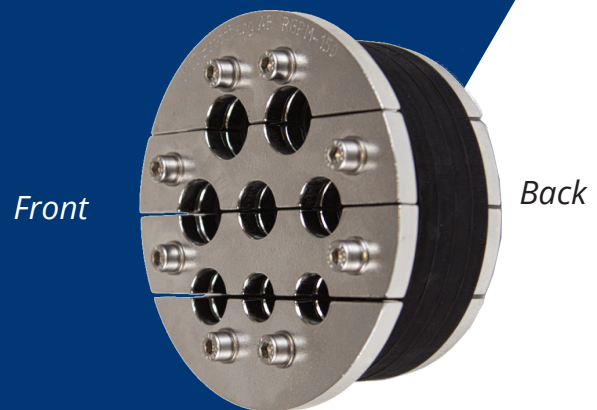
Large Flange

Allows the RGPM to be bolted to existing pipe flange plate. For use where pressure is applied from inside the pipe or where mechanical fixing is required. Max pressure is 15 Bars.



Standard Flange

Stop flange. Use where pressure is coming from front, rear or both sides. Max pressure from front side is 15 bars and 5 bars from back side.



Small Flange

For use when the RGPM must be installed inside the pipe/sleeve and where pressure is applied from front, rear or both sides. Max pressure without mechanical support is 5 bars.

